

Background:

Universal Serial Bus (USB) are devices that require drivers to be installed prior to use. Windows. These drivers essentially tell the Windows Operating System how to function properly with the hardware.

Document Scope:

This document describes how to install the USB drivers for the LANDTEC USB Instrument Communications Cable.

Prerequisites:

You will need to have the USB Cable that plugs into the LANDTEC instrument



and either the original CD or an internet connection so that you can download the USB drivers.



As an alternate to utilizing the original CD you can download the drivers from the internet by typing the following directly into your internet browser and clicking on Go.

<http://www.ces-landtec.com/misc/usb.zip>

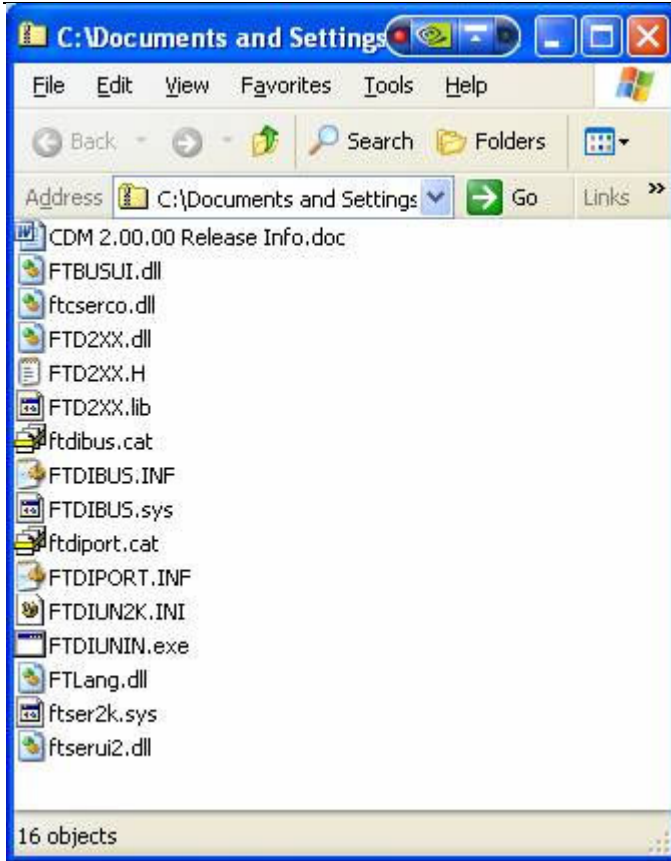
If prompted answer OK



Click on save file



Once saved there is a zip file that you can open. The contents can be "Drug and Dropped" into a folder onto your computer. Once "Dropped" the contents will be the driver files as shown below.



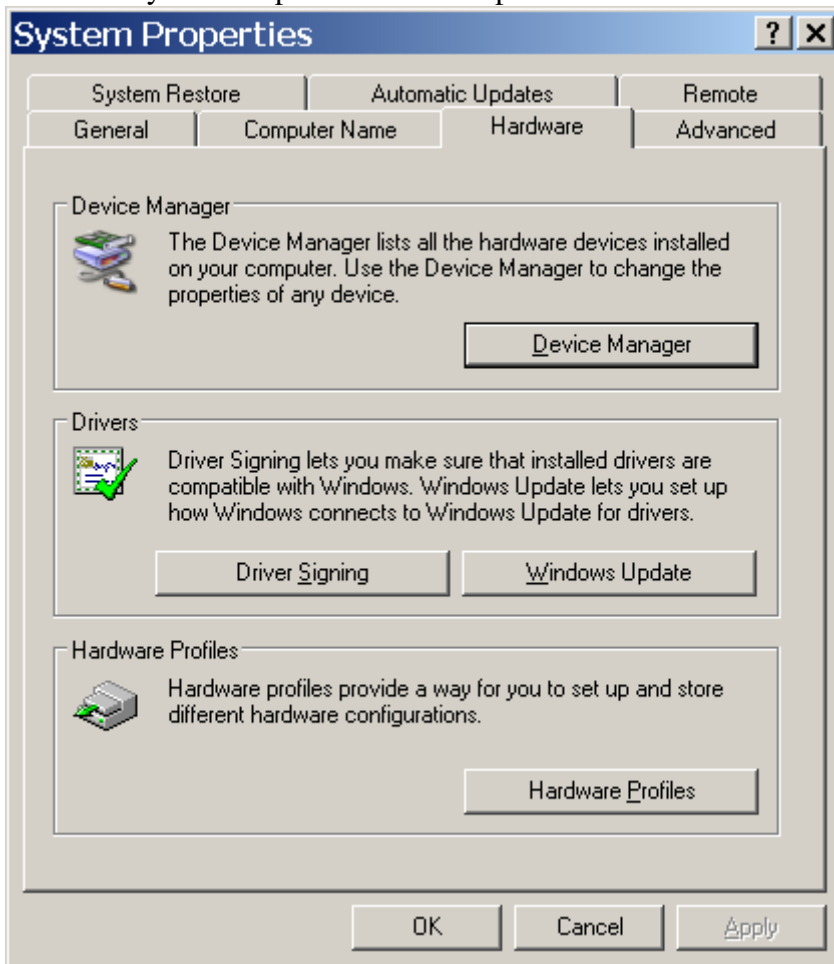
During the installation process you can specify the above folder rather than the CD.

Installation Procedure

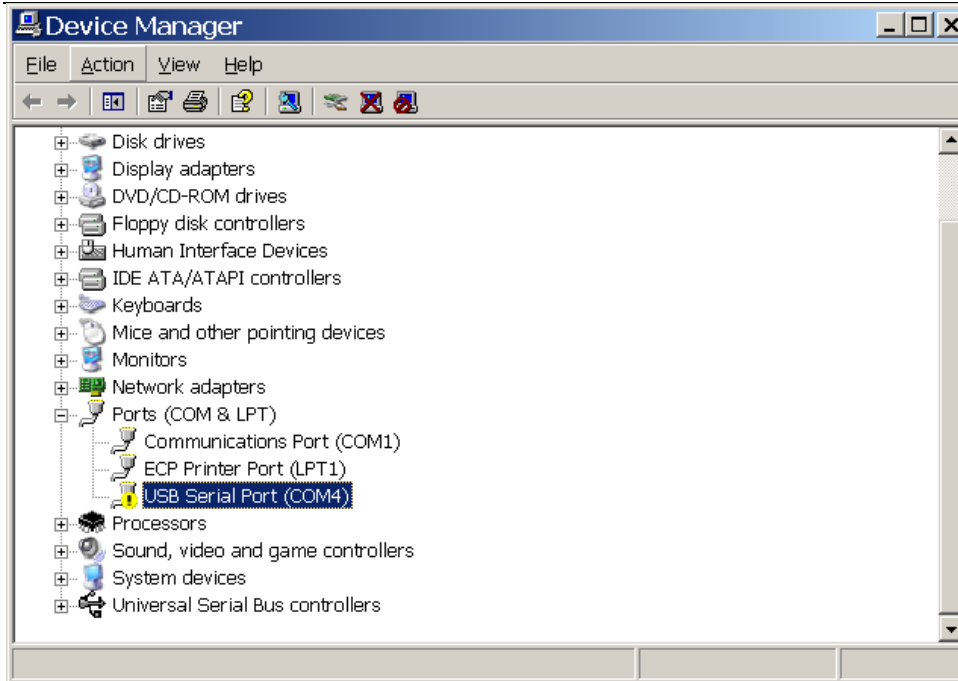
If you have previously plugged in your USB cable and did not install the drivers or you're experiencing a problem with your USB cable then you'll need to access the device manager. If you've never plugged in your cable then you can proceed to the section titled "The Welcome to New Hardware Wizard".

Right click on the "My Computer" icon and choose properties

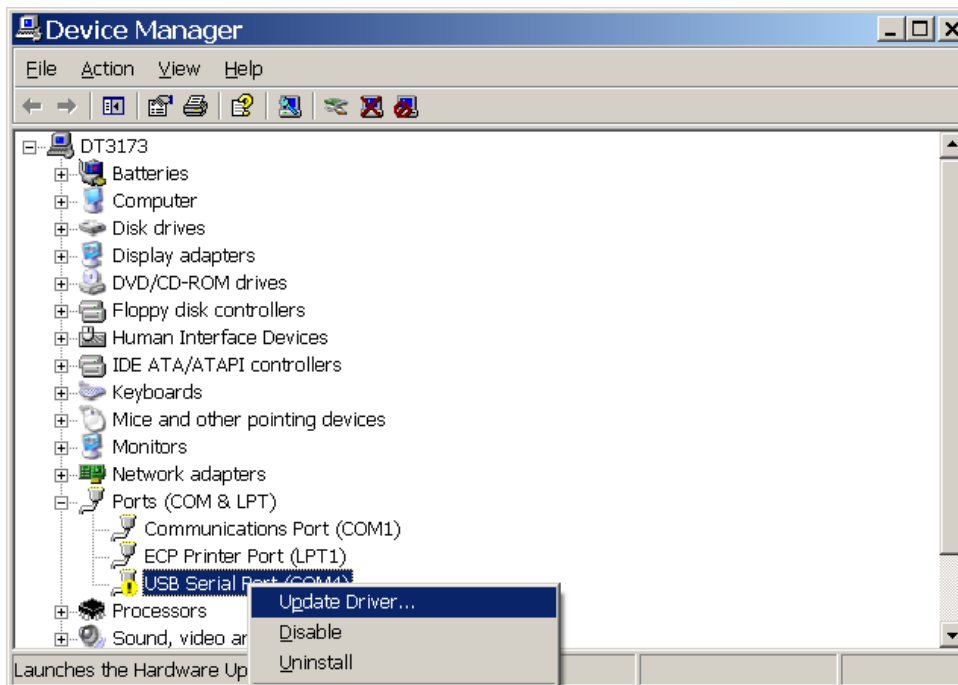
Once the System Properties window opens choose the Hardware Tab.



Click on Device Manager



Expand the tree branch for Ports. You should see one labeled “USB Serial Port”

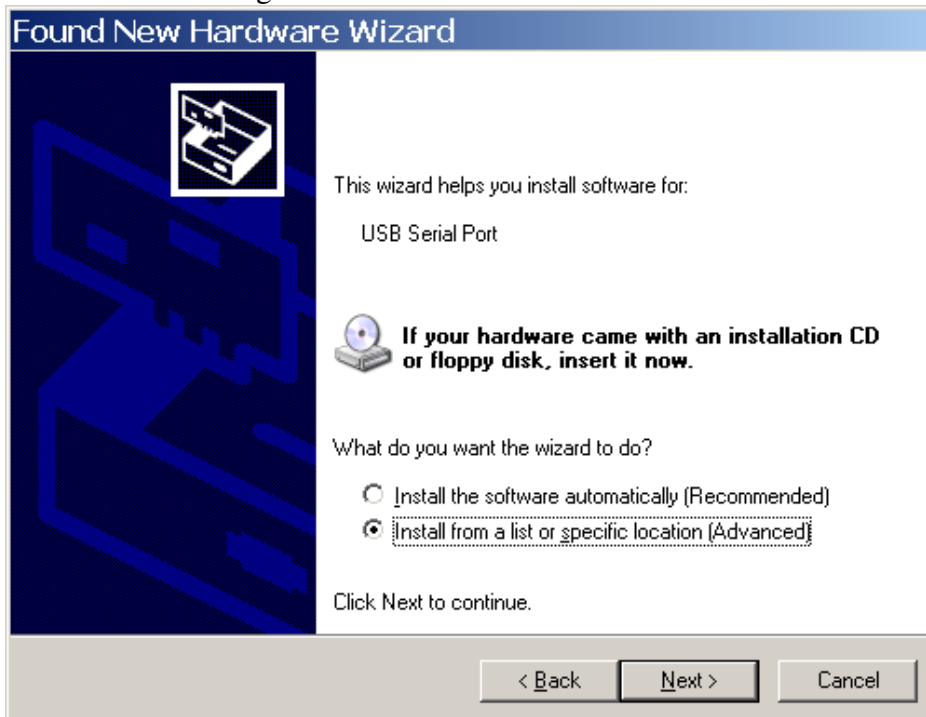


The Welcome to New Hardware Wizard

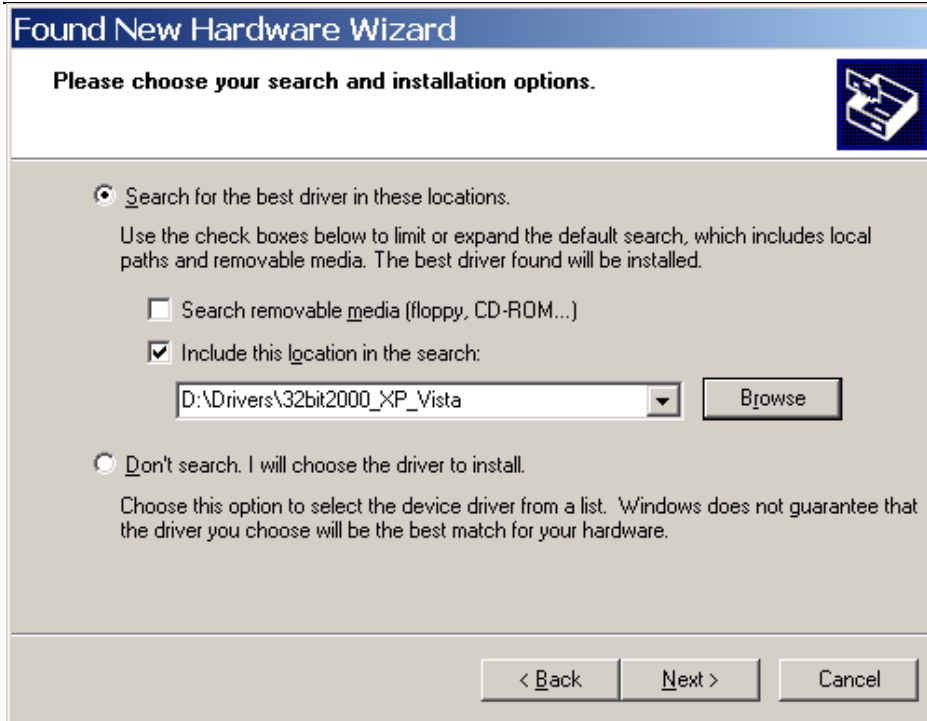
At this point the Welcome to new hardware Wizard will start



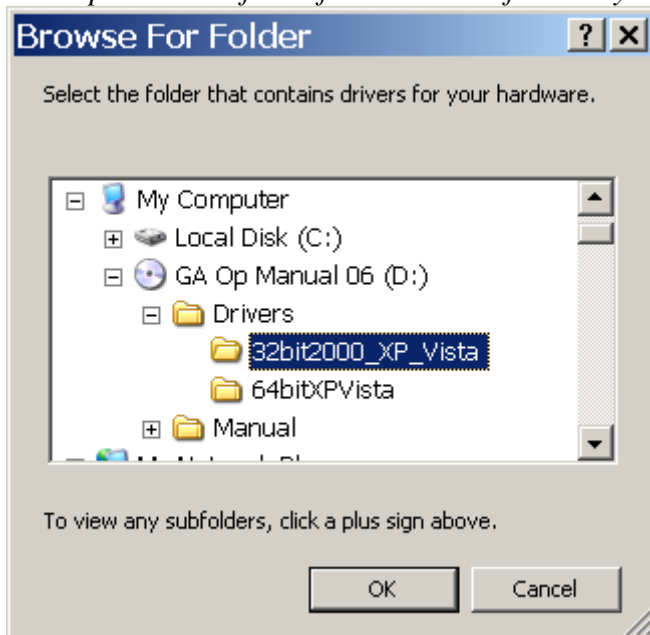
Choose NO to install from the CD or to the folder where you manually extracted the files to after downloading them from the website.



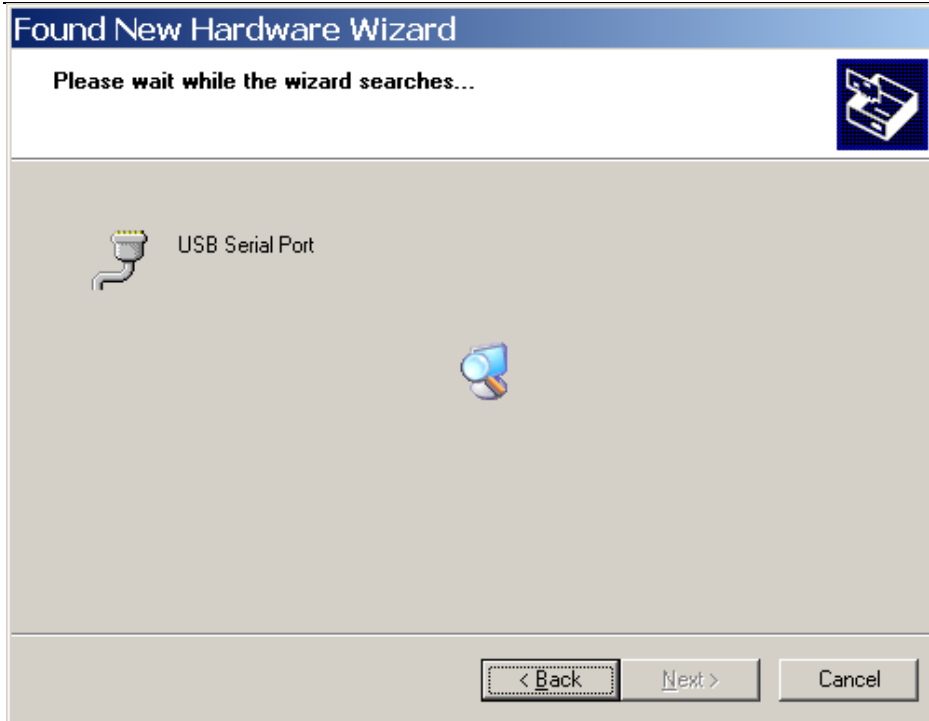
Choose "Install from a specific location (Advanced)" option



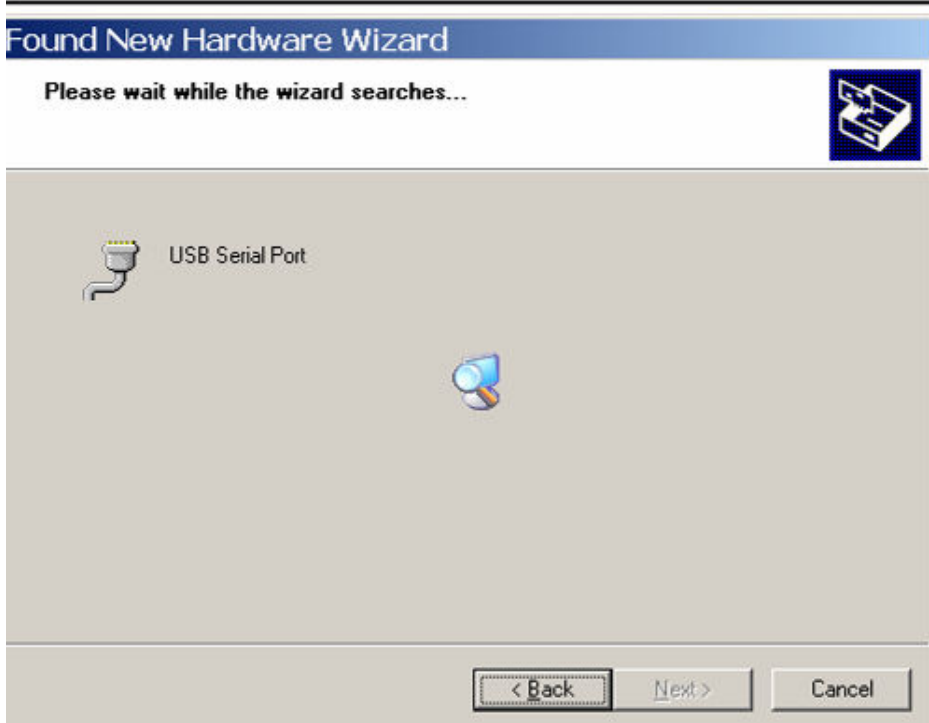
Browse to your CD Rom drive and choose the Drivers\32bit2000_xp_vista folder. (Note if you downloaded to the internet, browse to the folder where you decompressed the files of the USB.ZIP file that you downloaded.)



Click ok



The USB port will be found and the software installed



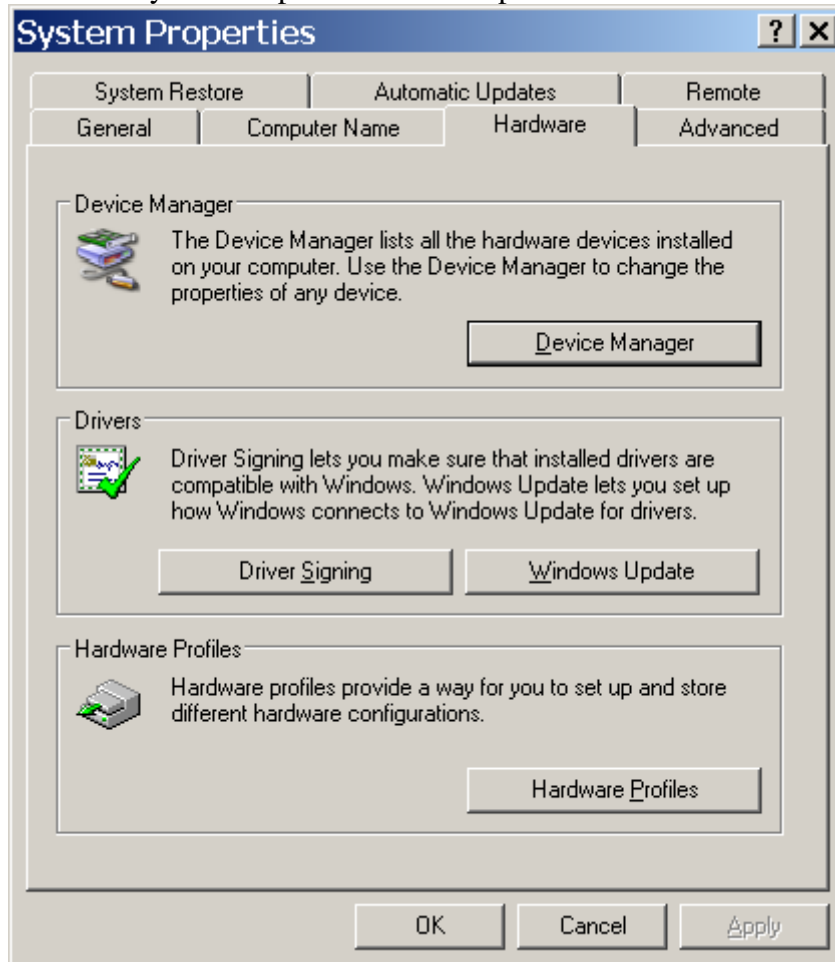


Click on finish

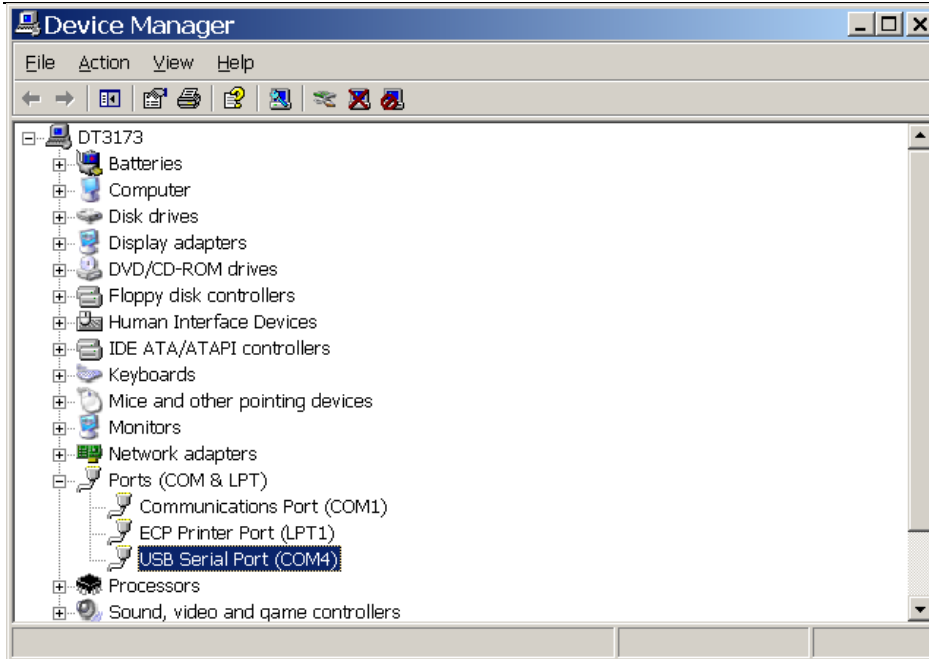
Verifying the drivers are installed

Right click on the “**My Computer**” icon and choose properties

Once the System Properties window opens choose the Hardware Tab.




Click on Device Manager and verify that you have a **USB Serial Port** under the Ports (COM & LPT) heading. Please note the COM port that's associated as this is the com port that LANDTEC's Software will need to use to connect to the instrument.



You should see an icon similar to  in front of the USB Serial Port. If you see an



icon with an exclamation mark  then the driver is not properly installed. Right click on the exclamation mark and choose update driver to attempt the installation again.